



COMPASS[®] *Listeria*

DETECTION AND ENUMERATION OF *LISTERIA MONOCYTOGENES* AND *LISTERIA* SPP. IN HUMAN FOOD PRODUCTS AND ENVIRONMENTAL SAMPLES



- **RELIABLE**

Validated method by AFNOR Certification according to ISO 16140 and formulated to the NF EN ISO 11290-1/A1 and NF EN ISO 11290-2/A1 (Ottaviani Agosti Agar)

- **QUICK**

Negative screening in 44 hours and confirmation of *L. monocytogenes* in only 6 hours

- **SIMPLE AND ECONOMIC**

Easily adaptable to all laboratory organizations :

- Use of Half-Fraser Broth for both detection and enumeration protocols
- Enrichment and agar may be conserved for 3 days

- **PERFORMANCE**

Absence of secondary enrichment and excellent selectivity of **COMPASS[®] *Listeria* Agar** for reading and optimal enumeration

- **EASY**

Clear distinction between **BLUE** colonies **WITH** halo of *Listeria monocytogenes* and **BLUE** colonies **WITHOUT** halo of *Listeria* spp.



COMPASS[®] *Listeria*



COMPASS[®] *Listeria* method allows the detection and enumeration of *Listeria monocytogenes* and *Listeria* spp. in human food products and environmental samples.

DETECTION

Half-Fraser Broth or BPW¹

⊕ Incubation
24 ± 2 h
30 ± 1°C



Plating 0.1 mL for surface inoculation or 1 mL for pour plate inoculation on **COMPASS[®] *Listeria* Agar**

ENUMERATION

Direct isolation



⊕ Incubation
24 ± 2 h
37 ± 1°C

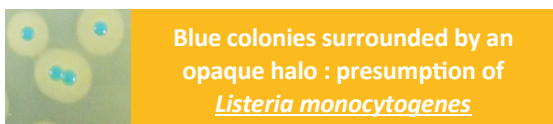


⊕ Incubation
48 ± 3 h
37 ± 1°C

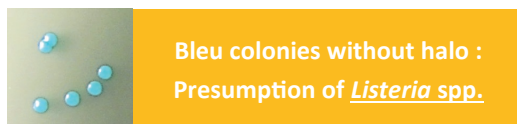
D+2

Reading and/or enumeration of a characteristic colonies²

D+2



Blue colonies surrounded by an opaque halo : presumption of *Listeria monocytogenes*



Bleu colonies without halo : Presumption of *Listeria* spp.

Confirmation test : re-streaking of characteristic colony³

CONFIRM' *Lmono* Agar (up to 6 confirmations on a single plate in 24 h) or **CONFIRM' *Lmono* Broth** (6 h)

⊕ Incubation 6 h at 37 ± 1°C



Negative test

Absence of *L. monocytogenes*



Positive

Presence of *L. monocytogenes*

PALCAM Agar (up to 15 confirmations on a single plate)

⊕ Incubation 24 ± 3 h at 37 ± 1°C



Black halo characteristic of *Listeria* spp.

TO KNOW

This method is validated according to ISO 16140 by AFNOR Certification, under reference BKR 23/02-11/02 (detection) and BKR 23/05-12/07 (enumeration) www.afnor-validation.org

¹ The **Half-Fraser Broth** with selective agents or **BPW** can be used for the enumeration protocol.

Enrichment broth and **COMPASS[®] *Listeria* Agar** may be kept for up to 3 days at 2-8°C before planting or reading.

² A first reading may be done after 24 hours of incubation for an easier and faster determination of highly contamination samples, however the result must be given after 48 hours.

³ When the presence of *Listeria monocytogenes* has already been confirmed following detection protocols, it is possible to skip the confirmation step after performing the enumeration procedure, in the event of positive results.

ORDERING INFORMATION

Half-Fraser Broth (Ready-to-use)

BM01608 – 10 vials of 225 mL
BM13308 – 3 Flexible bags of 3 L
BM13408 – 2 Flexible bags of 5 L

Half-Fraser Broth (base II + suppl.)

BK133HA – 500 g BK133GC – 5 kg
BS03008 – 10 vials qsp 500 mL
BS03208 – 8 vials qsp 2.25 L

Half-Fraser Broth (base + suppl.)

BK173HA – 500 g, BK173GC – 5 kg
BS05908 – 10 vials of 90 mL
BS06208 – 7 tubes of 10 mL

COMPASS[®] *Listeria* Agar

BM12308 – 20 Petri dishes (∅ 90 mm)
BM12408 – 120 Petri dishes (∅ 90 mm)

COMPASS[®] *Listeria* Agar kit

BT00808 – 6 vials of 200 mL, 6 vials of selective suppl. qsp 200 mL, 6 vials of enrichment suppl. qsp 200 mL

CONFIRM' *Lmono* Agar

BM13908 – 10 Petri dishes (∅ 90 mm)

CONFIRM' *Lmono* Broth

BM16208 – 18 vials

PALCAM Agar

BK145HA – 500 g bottle
BS00408 – Sel. Suppl. 10 vials qsp 500 mL
BS04908 – Sel. Suppl. 8 vials qsp 2,5 L
BM02008 – 20 Petri dishes (∅ 90 mm)

BIOKAR Diagnostics

Rue des Quarante Mines
ZAC de Ther—Allonne
60002 Beauvais Cedex France

Tél : + 33 (0)3 44 14 33 33
Fax : + 33 (0)3 44 14 33 34
www.biokar-diagnostics.com



Please refer to the technical data sheet for more information.

FP/LRD/VEN1013