

BIOEASY AFLATOXIN M1

RAPID TEST FOR AFLATOXIN M1 RESIDUES

Bioeasy Aflatoxin M1 is a rapid detection for Aflatoxin M1 in commingled cow milk.



RAPID

Results in 10 minutes



SENSITIVE

Adapt to specific regulations. (EU)



EASY-TO-USE

No extra devices required, easily perform on site or in lab



SIMPLE

Visually interpretation of results



ACCURATE AND RELIABLE



COST EFFECTIVE

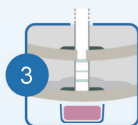
HOW TO USE



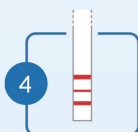
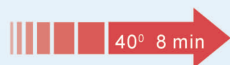
1 Take 200ul sample and mixed



2 Incubate 2 min at 40°



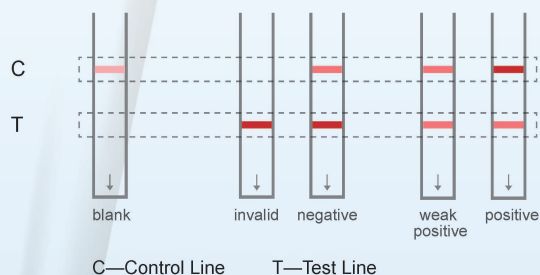
3 Place Test Strip



4 Visually Interpretation

RESULTS

Visual interpretation of the result by comparing the intensity of the "TEST" line with the one of the "CONTROL" line.



C—Control Line

T—Test Line

SENSITIVITY

TOXIN	BIOEASY LOD(ppb)
Aflatoxin M1	0.05

ORDERING INFO

ORDER CODES	KIT COMPONENT
YRM1004-0.05	1, Operation instruction 2, 96 test/kit: 12 tubes, each tube with 1 strip of 8 reagent micro-wells and 8 test strips.
.	.

STORAGE

At 2-8°C, out of sun light and moisture; Maintained sealed, do not freeze.

Shelf Life:12 months