



EuroProxima

FLOW-THROUGH RAPID TEST KIT FOR OCHRATOXIN A IN WINE (5127OCHW)

We offer the solution for the new EU legislation to the wine industry

- **Screening of Ochratoxin A in wine**
- **A precise, and highly sensitive assay**
- **Simple sample preparation**
- **Results within 10 minutes**

Screening of Ochratoxin A in Wine

Ochratoxin A is produced by some *Aspergillus* and *Penicillium* species. In order to test for OTA, analytical methods such as HPLC, GC-MS, LC-MS, ELISA and TLC require trained personnel, laboratory environment and expensive equipment. Further, analytical time takes hours or days. The Flow-Through Rapid Test kit offers rapidity and flexibility for screening OTA under non-laboratory environments in conformity with the EU regulations.

A Precise, and Highly Sensitive Assay

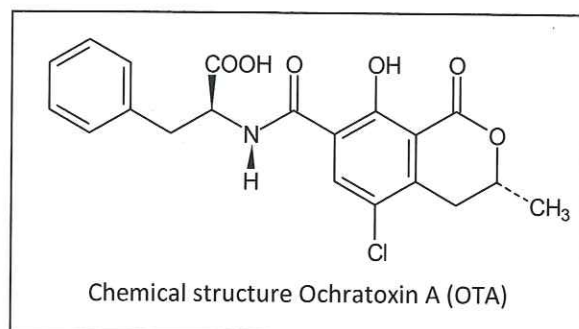
The Flow-Through Rapid Test for OTA can detect OTA in red, rosé and white wines with sensitivities down to 1 ppb.

Sample Preparation

Wine is prepared for analysis by simply shaking the sample by hand in the presence of an extraction solution. An aliquot of the supernatant is filtered and used in the assay.

Results within 10 minutes

- (a) The Flow-Through Rapid Test for OTA has a detection limit of 1 ppb (ng/g) (EU Reg. 2ppb).
- (b) Configured for 1 – 10 tests at a time
- (c) Reagents are added drop-wise
- (d) Results are visually interpreted.



Validated Matrices

Red, rosé and white wines

Kit Contents

| | |
|-----------------------------------|------|
| Membrane Devices | x 10 |
| 3 ml Syringes | x 10 |
| Filters | x 10 |
| Kit Manual | x 1 |
| Extraction Solution Vials | x 10 |
| Reagent C: Anti-OTA Mab | |
| Reagent D: OTA-HRP Conjugate | |
| Reagent E: Wash Buffer | |
| Reagent F: TMB Substrate Solution | |



[03]11